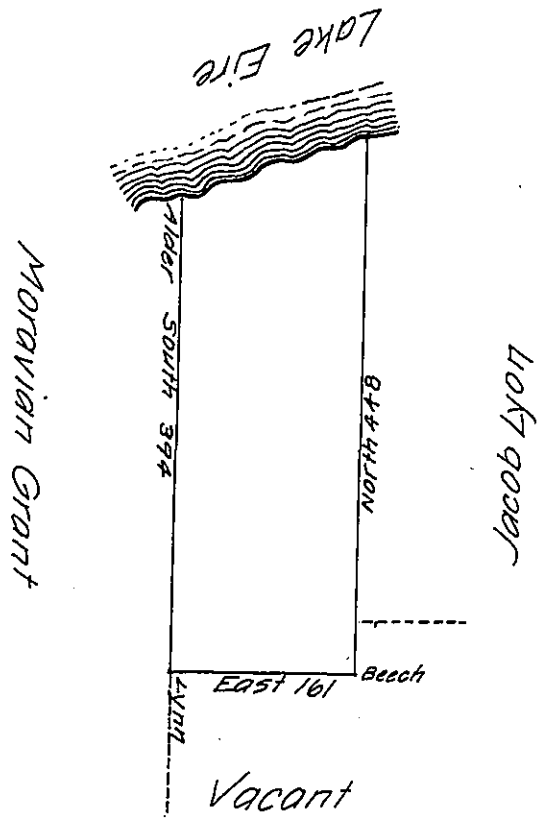


Up the Lake
S 70 W 73
S 88 W 51
S 55 W 50



A Draught of a Tract of Land Situate in Springfield township Erie County on Lake Erie Surveyed the 5th day of August 1801 for Wilson Smith by Virtue of his Actual Settlement residence and Improvement in 1796 and kept up since by Solloman Spalding Containing 400 Acres Allowance &c.

John Cochran D.S.

I Certify the above to be a true Copy of the Survey Book in my office given under my hand at Erie August 10th 1822.

To Samuel Cochran Esq:
Surveyor General

Jonah Cowgill D.S.

IN TESTIMONY that the above is a copy of the original remaining on file in the Department of Internal Affairs of Pennsylvania, made conformably to an Act of Assembly approved the 16th day of February, 1833, I have hereunto set my Hand and caused the Seal of said Department to be affixed at Harrisburg, this twenty sixth day of September 1906

Isaac P. Rowley
Secretary of Internal Affairs.